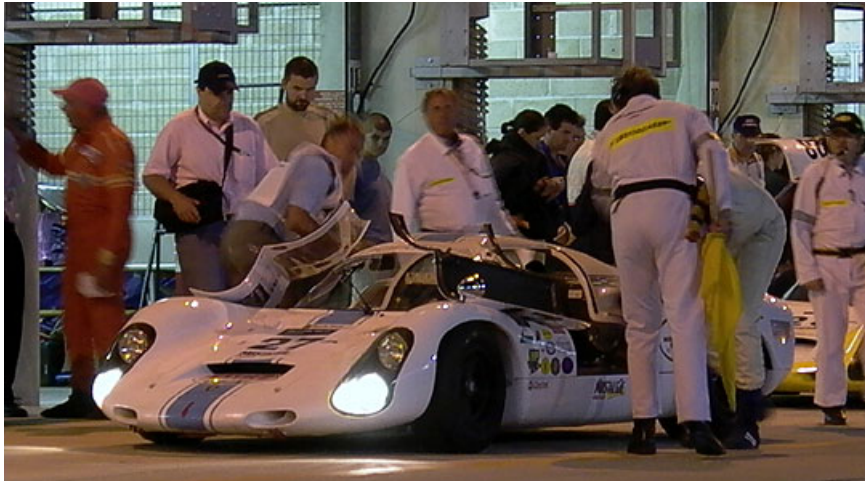


CLASSIC DRIVER



Le Mans Classic 2006 - Preview

27 June 2006 | Classic Driver



Now in its third running, the Le Mans Classic has established itself as one of the highlights of the historic racing calendar. Nearly 400 cars, built from 1923 to 1979, are entered in a celebration of the one of the world's greatest races.

The cut-off period is now 1979 so the entry has been opened up to **Ferrari 512 BBLMs** and **BMW M1s** and, as with so many of the entries, many of these are being driven by the racing drivers who made them famous at the time. The criterion for entry to the Le Mans Classic is simple - a vehicle that is either an actual ex-Le Mans car, or of an identical type that competed in the 24 Hours race from 1923 - 1979. Drivers can share the car and either elect to do a complete round each, or swap over during the individual races. Many drivers choose to do the whole event solo.

For those unfamiliar with the format it can be summarised thus; the maximum 396 car entry (plus 50 reserves) is divided up into six grids (or 'plateaux') by date, with the object of completing 3 races per grid within a 24-hour period starting at 16.00 on Saturday and finishing 16.00 Sunday. As in 2004, the oldest cars (Grid 1, cars from 1923 to 1939) start the event, then Grid 2 (1946 to 1956) and so on until 18 individual races have been completed. The second races are due to start at midnight on Saturday, the third at 08.00 on Sunday morning.



This year's list of 'runners and riders' is the best yet. You can see the full listing below but the following will précis each grid -

Grid 1 1923 - 1939

The early years at Le Mans where first **Bentley** and then **Alfa Romeo** and **Bugatti** dominated the winner's podium. **Aston Martin** was also a regular and significant player for class victory and to celebrate this none other than the company's CEO Dr Ulrich Bez will be sharing Richard Ashmead's **Aston Martin LM4** while several other **Ulsters** and **ex-Team Cars** are also entered. Expect the winner to be a **BMW 328**, although I wouldn't be surprised if one of the **Talbots** pushed them all the way to the line.

Grid 2 1949 - 1956

Things get a bit faster now and the organisers have done some re-jigging of the classification to ensure the most exciting racing. So no **D-Types** but a plethora of **Jaguar C-Types** and **Aston Martin DB3Ss**, together with the very fast (and expensive!) **Austin Healey 100S** models that include an entry from *Dire Straits'* Mark Knopfler, sharing with ex-Le Mans driver and commentator Alain de Cadenet. There are also a couple of big **Ferraris**, the **1953 375 MM Spyder** of the Bamford family a notable entry while Gary Pearson in Carlos Monteverde's **1955 750 Monza** should be right up there too.



Grid 3 1957 - 1961

Dr Bez makes a return, this time sharing the actual car that won Le Mans in 1959, the **Aston Martin**

DBR1 of Tim Samways Sporting and Historic Cars. Co-driven by Peter Hardman, the car is a front-runner and will be battling with the team's **1960 Ferrari 246S**, the Williams/Harper **Jaguar D-Type** and the Friedrichs/Clark **Aston Martin P212** for overall victory. And don't forget the horde of howling **Ferrari 250 GT SWBs** and the **1960 Aston Martin DB4GT** of Thornton/Garrett, a car that did very well last time. In 2004 this grid provide the closest and most exciting racing.

Grid 4 1962 - 1965

It's **GT40** time as the earlier cars from Slough (or Venice, California depending on your standpoint) take the stage. There are also **Iso/Bizzarrinis**, **Jaguar E-Types** and **AC Cobras** aplenty, and look out for the various **Porsche 904s** really having some space to fly - their speed amazed me last time having been used to chicane-blighted modern circuits emasculating their performance. The three **Ferrari 250LMs** should keep the 'Detroit iron' honest - I'd never discount Hardman or Pearson but over a short distance per round it's likely to be a **GT40** that takes the top spot like F1 designer Adrian Newey's or the brilliant John Young in Leo Voyazides' car.

Grid 5 1966 - 1971

There's some serious stuff out on the track now. The later **GT40s** (with wider wheels and bodywork flared to match), Ansembourg's **Porsche 917**, Laurence Stroll's **ex-Penske Ferrari 512M**, **Lola T70s**, a **Ferrari P3**, **Porsche 908s** and a variety of super-quick 2-litre cars. There's also the first of the **Gp IV Ferrari Daytonas**, **Chevy Corvettes** and **Ford Shelby 350 GTs**.



Grid 6 1972 - 1979

With an entry that included Henri Pescarolo in an **Inaltera**, Jurgen Barth in a **Porsche 936** and Jean Ragnotti in an **Alpine A 443** one might be forgiven for thinking the organisers had actually mastered the art of time travel. This race was superb last time for the very reason that it included so many ex-Le Mans drivers who really knew what they were doing. I can remember the start of the night race as they came into the Dunlop chicane for the first time - an unbelievable experience. Another car to watch is the **1976 Lola T286** of Skidmore/Rahal (yes, that Rahal...), a tremendously quick machine.

In addition to the racing, owners clubs have been actively encouraged to put on displays - the meeting is supported by the FFVE and the FIVA federations, and 5,000 cars are expected - and a much larger range of trade stands than last time will be present in the re-vamped Village that was so much improved for this year's modern race. The infield of the 'Bugatti' Circuit will be the area to go to for club and marque displays.

There will be also be a "Le Mans Heritage Club" reserved for genuine ex-24 Hours cars not actually racing. These will be judged in a concours d'elegance.



Christie's will be conducting a sale on Saturday morning with a stellar catalogue - full details [in our separate preview](#) .

The action starts on Friday at 08.00 and continues right up until the prizegiving around 17.30 on Sunday. Practice starts at 15.00 on Friday afternoon (until 20.00) with a two hour break before night practice from 22.00 to 02.00. Click [HERE](#) for a full programme from the organisers.

For details on ticketing, maps and all the action please visit www.lemansclassic.com

The very latest entry list produced by the organisers is as follows -

Grid 1 1923 - 1939

Drivers	Nationality	Car
ARTHURS/WILTSHIRE/BROWN	GB/GB/GB	BENTLEY 3 L Speed Model 1926
ASHMEAD/BEZ	GB/GB	ASTON MARTIN LM 4 1930
BENOIT LATOUR/BLANCHARD/NICOLOSI	F/F/F	BUGATTI 37 A 1931
BENOIT LATOUR/BLANCHARD/NICOLOSI	F/F/F	BUGATTI 43A 1930
BLAKENEY-EDWARDS	GB	TALBOT 105 BGH 22 1934
BOUCHERON/BOUCHERON/BOUCHERON	B/F/F	BENTLEY 4.5L 1930
BRAMALL/WESTMORELAND	GB/GB	ASTON MARTIN 2 Litres Speed 1936
BRANDT/MICHAELIS	D/D	LAGONDA LG45 1937
BROICH	D	MERCEDES BENZ SS 1928
BROOKS	USA	BUGATTI 37 A 1927
BRUNNER/FRIEDLI/GRAIGNIC	F/F/F	BUGATTI 35 B 1929
BUGLER/WOOD	GB/GB	LAGONDA LG45 1937
BURCKHARDT/SCHORNO/BURCKHARDT	CH/CH/CH	BMW 328 1939
BURNETT	GB	TALBOT 105 BGH 23 1934
CHANOINE/DZIECOL	F/F	ALFA ROMEO 6C 1500S 1928
CLEAR/FURNELL	GB/GB	RILEY Brooklands 1930
COINTREAU	F	BNC 527 C 1928
COINTREAU/NOVO	F/F	BUGATTI 51 1932
DEE/BELL	GB/GB	ASTON MARTIN 2 L Speed 1936
DHERBECOURT/ICKX/NELIS	F/B/B	BNC 527 C 1929
DIETEREN/DIETEREN/LALMAND	B/B/B	DELAGE D 6 1938

DIFFEY/STEVENS	GB/GB	TALBOT 105 BGH 21 1934
DUBUIS/CORIC/PHILIPPE	F/F/F	SINGER Nine 1934
DZIEMBOWSKI/SCHARNHORST	D/CH	TALBOT LAGO T150 C 1936
EMMERLING	D	RILEY Brooklands 1928
ERNST/DUBSKY	D/AUT	ASTON MARTIN LM 1931
FABRI/STOOP	B/GB	ASTON MARTIN ULSTER 1935
FREEMAN/BÜSST	GB/GB	ASTON MARTIN Speed Model 1936
GRANT/GRANT JONKERS	GB/B	BMW 328 1939
GUYATT/WARRINGTON	GB/GB	STUTZ Blackhawk 1929
HUDSON/SADLER	GB/GB	TALBOT 105 1933
HUGENHOLTZ	NL	BUGATTI 43 1928
JOHNSON	USA	RILEY Brooklands 1930
JONES/COUCHER	AUS/GB	CHRYSLER 75 1929
KENDALL/KENDALL/GEORGE	USA/USA/USA	ALFA ROMEO 8C Monza 1932
KNÖCHLEIN	D	BMW 328 1938
KNOPFLER/CADENET	GB/GB	INVICTA Type S 1930
LAFFONT/COURTEIX/CONSTANTIN	F/F/F	BUGATTI 44 1928
LAKE/VARLEY	GB/GB	ASTON MARTIN Speed Model 1937
LALARDERIE/MORALES/MOREAU	F/F/F	BENTLEY 3,5 I 1934
LANDY	GB	BENTLEY 4.5L 1929
LAURENT-BELLUE	F	ASTON MARTIN LM 1933
LEES/SEBBA	GB/GB	MORGAN 4-4 1938
LEHR	D	LAGONDA V 12 1938
MARTY/LEGELEUX	F/F	HRG 1500 1939
MASON/MASON/MASON	GB/GB/GB	ASTON MARTIN ULSTER 1935
MILOE	F	DELAHAYE 135 S 1936
MOREAU/ROUSSEAU	F/F	HRG Le Mans 1937
OSTMANN/KOZKA	D/D	LAGONDA Rapier 1934
PHILIPPE/LANSARD	F/F	BENTLEY 4.5L 1928
PILKINGTON	GB	TALBOT T26 SS 1937
POSTEL/BLANCHARD	F/F	BUGATTI 37 1927
RINALDI/RINALDI	F/F	BUGATTI 35 1925
ROTHENBERGER	D	INVICTA Type S 1931
SAGE/TRABER/TRENER	F/CH/USA	DELAHAYE 135 S 1935
SAXL/FOSTER	GB/GB	MG Midget 1931
SINGER	GB	BENTLEY 4.5L supercharged 1929
SINGER/SINGER	GB/GB	BENTLEY 3 L 1928
STEUER/MIGUEL/CORTES	COL/E/COL	BENTLEY 4,5l "Le Mans" 1928
STOW	GB	INVICTA Sports 1929
STRICKLAND	GB	BENTLEY 3 L TOURER 1925
TANG/OTTEN	D/D	BMW 328 1937
VAN DER KROFT	NL	TALBOT 105 GO 51 1931
WILLS/PARR	GB/GB	BMW 328 1937
ZIMMER/GUIRE	NL/GB	TALBOT 105 GO53 1931

Drivers	Nationality	Car
ARNOLD	GB	AC ACE 1955
ASHMEAD/COLBORNE-BABER	GB/GB	LOTUS IX 1955
BAMFORD/BAMFORD/BAMFORD	GB/GB/GB	FERRARI 375 MM Spyder 1953
BARDINON/ROUET	F/F	ALLARD J2X 1952
BARKER/BARKER	GB/GB	ASTON MARTIN DB2/4 1954
BEAUMARTIN/ROCHAT	F/CH	AUSTIN HEALEY 100 M 1955
BINNIE	USA	JAGUAR Type C 1953
BOUCHERON/BOUCHERON/BOUCHERON	B/F/F	FIAT 1500 Spéciale 1950
CHAMBON/CHAMBON	F/F	MASERATI 300 S 1955
CLARK/PRILL	GB/GB	PORSCHE 356 1953
CLEGG/GROSS/GLONE	GB/USA/GB	ASTON MARTIN DB3S 1955
CRIPPA	I	FERRARI 340 MM 1953
DAVIES/BLACK	GB/GB	LOTUS XI 1956
DAVIS/HALL	USA/GB	FERRARI 750 Monza 1955
DELIGNY/DELIGNY/DELIGNY	F/F/F	PANHARD Monopole 1956
DEVIS/MOLLEKENS	B/B	MASERATI 250SI 1956
DUDLEY	USA	FERRARI 166 / 195 S 1950
EGIDY/GAJDOS	CZ/CZ	SKODA Skoda Sport 1949
ELOY	F	AUSTIN HEALEY 100 M 1955
FABRI/STOOP	B/GB	ASTON MARTIN DB3S 1955
FERNANDEZ/STRETTON/ARNAUD	E/GB/F	TALBOT LAGO T26 GS 1951
FLATT/COSBY/SIMON	GB/GB/GB	ASTON MARTIN DB2/4 1953
FRANKLIN	GB	MASERATI 300 S 1955
FRIEDRICHS/CLARK	D/GB	ASTON MARTIN DB3S 1954
GRANDIDIER/REGENT	F/F	ASTON MARTIN DB2/4 1954
GREGSON	GB	LOTUS XI 1956
GROOM/CHISHOLM	GB/GB	JAGUAR XK 140 FHC 1955
HADFIELD	GB	JAGUAR Type C 1952
HORBACH/VOGL	D/AUT	PORSCHE 356 1953
HUBIN/DURECU	F/F	TRIUMPH TR2 1955
JOHNS/GIBBON	GB/GB	JAGUAR XK 140 1955
JOLLY/FARTHING/FURNESS	GB/GB/GB	ASTON MARTIN DB2 1952
KLEISSL/KUHN/WEINDLER	D/D/D	MERCEDES BENZ 300 SL 1955
KNOPFLER/CADENET	GB/GB	AUSTIN HEALEY 100 S 1954
KOERVER/KÖLNBERGER	D/D	TALBOT LAGO T26 GS 1948
KURTH/PABST	D/D	JAGUAR XK 120 1949
LANCKSWEERT	B	FERRARI 250 GT Tdf 1956
LANGEWIESCHE	D	LOTUS IX 1955
LESEUR/BALLY	F/F	AC ACE Bristol 1961
LUCAS/DAY	GB/GB	MASERATI 200S 1956
MAHMOUD	RL	ASTON MARTIN DB2 1952
MIDY/CARON	F/F	FERRARI 121 LM 1955
MIGUEL/ARIAS CANETE/FERNANDEZ	E/E/E	NASH Le Mans 1952
MONTEVERDE/PEARSON	BR/GB	FERRARI 750 Monza 1955
OTTEN/WINDSOR-PRICE	D/GB	ALLARD J2 1950

PEARCE/PEARCE	GB/GB	AC ACE Bristol 1958
PECCENINI/JONVILLE CHAROY	F/F	LANCIA Aurelia B20 1956
PINELLI	F	LOTUS IX 1955
REICHLER/WEILER	D/D	ALLARD J2X 1952
RIBADENEIRA/RIBADENEIRA	ECU/ECU	JAGUAR Type D 1955
ROGERS/WOOLLEY	GB/GB	AUSTIN HEALEY 100/6 1956
RUCHETON/RUCHETON/RUCHETON	F/F/F	DB Sport 1945
SCHENK	D	MASERATI A6 GCS 1954
SHARP/HOBLE	GB/GB	ASTON MARTIN DB 2 1953
SPADINI/VOGT/BLANPAIN	CH/CH/B	JAGUAR XK 140 1955
STEUER/MIGUEL/CORTES	COL/E/COL	CADILLAC Coupé 1950
TERRELL/VAN GELDER	GB/NL	JAGUAR XK 120 1952
THORNE/TODD	GB/GB	AUSTIN HEALEY 100 M 1955
TRABER/TRENER	CH/USA	ASTON MARTIN DB3S 1953
TROUSSIER	F	AUSTIN HEALEY 100 M 1955
VANANTY/SIEBENTHAL/VUARNET	CH/CH	AUSTIN HEALEY 100 1955
WEBB	GB	JAGUAR Type C 1952
WENMAN/BRONSON	GB/GB	JAGUAR Type C 1952
WINDSOR-PRICE/BUTLER/BUTTERWORTH	GB/USA/GB	ALLARD J2R 1953
ZWEIFLER/KUTTNER	D/USA	MASERATI 200 SI 1955

Grid 3 1957 - 1961

Drivers	Nationality	Car
ALBOROUGH/RICHARDSON	GB/GB	AC ACE Bristol 1954
AUBERT/GONZALEZ ALBERTOS/WASSMANN	GB/E/E	LOTUS Elite 1960
BATT/FLOYD	GB/GB	JAGUAR Type E 1961
BENNETT/WOODGATE	GB/GB	ASTON MARTIN DB 4 GT 1960
BEZ/HARDMAN	GB/GB	ASTON MARTIN DBR1 1957
BONGIRAUD/LINEL/BLASCO	F/F/F	OSCA MT 4 1957
BONNEFOY	F	PORSCHE 356 1956
BOUZANQUET/MIRA GOMES	F/P	LOTUS Elite 1960
CANE/PROTON DE LA CHAPELLE	F/F	LOTUS XI 1959
CHARAGIONIS/DROULISCOS	GR/GR	LOTUS Elite 1961
CONWAY/MERCER	GB/GB	AC ACE Bristol 1960
CUPELLINI/MOHSSEN/TACCONI	I/TN/I	FERRARI 250GT Berlinetta 1959
DELIGNY/CAVALAN	F/F	DB HBR5 Coach 1958
DENEVE/BRISON	B/B	TRIUMPH TR3 A 1958
DUBBINI/TACCONI	I/I	LISTER JAGUAR Sport 1955
DURAND/CLOT	F/F	DB HBR5 Coach 1958
FERNANDEZ/MIGUEL/ARIAS CANETE	E/E/E	PORSCHE RSK Spyder 1959
FRIEDRICHS/CLARK	D/GB	ASTON MARTIN DP 212 1961
GAYE	B	FERRARI 250GT Berlinetta 1960
GIBSON	GB	LISTER JAGUAR Knobbly 1959
GOLDSMITH/GOLDSMITH	GB/GB	ASTON MARTIN DB4 GT 1960
GRAVE/ARTERO	CH/F	FERRARI 250GT Berlinetta 1961
GRAVIER	F	LOTUS XI 1957

GUICHET/GUICHET	F/F	ALFA ROMEO Giulietta SZT 1960
GUTZWILLER/SALVADORI	CH/I	ALFA ROMEO Giulietta SZT 1961
HATLAPA/EADS	D/USA	PORSCHE RS 60 SPYDER 1960
HUMILY/HUMILY/GOUEDARD	F/F	AUSTIN HEALEY 3000 1961
KING/SMITH/THOMAS	GB/GB/GB	SUNBEAM Alpine 1961
KOJIMA	J	ALFA ROMEO SVZ 1957
LE BLANC/VAN LANSCHOT	NL/NL	AUSTIN HEALEY 3000 1960
LEROY	F	OSCA 750S 1958
LEVENTIS/DRON	GB/GB	FERRARI 246 S 1960
LUNN/KEITH-LUCAS	GB/GB	LISTER Jaguar 1958
LYNN	GB	LISTER JAGUAR Knobbly 1958
LYON/SCHMIDT	USA/USA	PORSCHE Abarth GTL 1961
MACLEOD/TURRAL/BARFF	SCO/GB/GB	PORSCHE 550 A 1500 RS 1957
MAHMOUD	RL	ASTON MARTIN DB4 GT 1960
MALONE	USA	LOTUS 15 1959
MAZOYER/MENUTEAU	F/F	MG A 1959
MONTEVERDE/PEARSON	BR/GB	FERRARI 250 TR 1958
MOREL D'ARLEUX/NELIS	F/B	PORSCHE 356 B 1960
MOYES/RICHARDSON/YOONG	GB/GB/	PORSCHE 356 A 1957
OTTEN/OTTEN	D/D	OSCA 1600 GTS Zagato 1961
PAPPALARDO	USA	FERRARI 250 GT California 1960
PEETERS	B	LOTUS XI 1957
PELETIES/PAPADOPOULOS	CY/CY	LOTUS Elite 1960
PEROU/DUVAL	F/F	AUSTIN HEALEY 3000 1961
PETCH/BULL	GB/GB	TRIUMPH TR3 1959
RUDDLE/SMALL/STAFFORD	GB/GB/GB	CHEVROLET Corvette 1960
SANTIN/ALBERT	F/F	PORSCHE 356 1964
SCHENK	D	PORSCHE RS 61 1960
SHEPHERD/STOCKBRIDGE	GB/GB	AC ACE Bristol 1959
SINKE/SINKE/KERKHOF	NL/NL/NL	AUSTIN HEALEY 3000 1961
SMITH/WALZER	USA/USA	LOTUS 15 1958
STEVENS/MC DONALD	GB/GB	PEERLESS GT 1958
THALMAN		PORSCHE 356 A GT 1959
THORNTON/GARRETT	GB/GB	ASTON MARTIN DB4 GT 1960
TRABER/TRABER	CH/CH	FERRARI 250GT Berlinetta 1960
TRENER/FILLON	USA/F	FERRARI 250GT Berlinetta 1960
TROUILLARD	F	LOTUS XI 1958
VAN DER KROFT/BELLINGER	NL/GB	MORGAN +4 1959
VERHILLE/RUCHETON	F/F	LOTUS XI 1957
WANTY	B	LOTUS XI 1958
WEBB	GB	JAGUAR Type D 1955
WILLIAMS/HARPER	GB/GB	JAGUAR Type D 1956
ZWEIFLER/KUTTNER	D/USA	MASERATI 200 SI 1957

Grid 4 1962 - 1965

Drivers	Nationality	Car
---------	-------------	-----

ALBUQUERQUE	P	ISO A3/C 1963
ANSEMBOURG/REGOUT	B/B	ISO A3/C 1965
BAMFORD	GB	FERRARI 250 GTO 1964
BARGIGLI/CHRISTIAENS	B/B	PORSCHE 356 B CARRERA 2000GS 1962
BELLM	GB	FORD GT40 1965
BERBERICH-MARTINI	D	CHEVROLET Corvette 1965
BINNIE	USA	FORD GT40 1965
BLANPAIN/VAN RIET	B/B	FERRARI 275 GTB 1965
BONNET/LEGEIN	B/B	FERRARI 275 GTB 1965
BRATKE/LOUISODER	D/D	FORD Shelby 350 GT R 1965
CARON	F	AC Cobra 1963
CONNOR/SULLIVAN/MARSH	USA/USA/GB	ALFA ROMEO TZ 1964
COTTERET/REICHER	F/F	RENE BONNET Djet II CRB/ 1L 1963
DEVIS/MOLLEKENS	B/B	AC Cobra 1963
DRON/MARSH	GB/GB	TRIUMPH TR4 1962
DZIEMBOWSKI/SCHARNHORST	D/CH	JAGUAR Type E 1964
ECKFORD/BEIGHTON	GB/GB	SUNBEAM Le Mans Tiger 1964
ELSTROP/ELSTROP	GB/GB	TRIUMPH Spitfire 1964
FERRAO/FERRAO	P/P	MARCOS 1965
FOUAN/ABEL DE LIBRAN	F/F	JAGUAR Type E 1961
FOURNIER	F	CD PANHARD LM 64 1964
FRANKLIN	GB	FERRARI 250LM 1964
FRERS	D	PORSCHE 904/6 1964
GAUDARD/DONCKER	CH/B	AC Cobra 1964
GELY/MARCEL	F/F	JAGUAR Type E 1964
GOLD/DIFFEY	USA/GB	PORSCHE 904 GTS 1964
GOODMAN	USA	CHEVROLET Corvette 1965
GUTZWILLER	CH	LOTUS Elan 1964
HAMPSON/BRADFIELD	GB/GB	SUNBEAM Alpine 1962
HINDERER/STRETTON/BAYERN	D/GB/D	AC Cobra 1964
HOOPER/WOOD	GB/GB	TVR Grantura MK III 1963
HUGENHOLTZ/TAMBAY	NL/F	FORD GT40 1965
KNAPFIELD	GB	FERRARI 275 GTB 1965
KREMER/KREMER	CH/GB	MORGAN Plus 4 SS 1962
LECOU/BARGE	F/F	FORD GT40 MarkII 1965
LEVENTIS/HARDMAN	GB/GB	FERRARI 250LM 1965
LONGTON/LAMBERT/EDNEY	GB/GB/GB	MG B 1962
LOREILLE/ROGER/QUEFFELEC	F/F/F	RENE BONNET LM 6 1963
LUCCHINI/MINUTI/GADOLA	I/I/I	ALFA ROMEO TZ 1965
LYNN	GB	FORD GT40 1964
MAHUL	F	CD PANHARD 1963
MARGAINAUD/MEY	F/F	LOTUS Elan 1963
MEINS/WILSON	GB/USA	FORD GT40 1964
MERLIN	F	LOTUS Elan 1964
MILOE	F	PORSCHE 904 GTS 1964

MOLITOR/PICHLER	D/AUT	ABARTH SIMCA 1300 OT 1965
MONTEVERDE/PEARSON	BR/GB	FERRARI 250LM 1964
NASH/MARTEN	IRL/GB	TVR Grantura MK III 1962
NEWY	GB	FORD GT40 1965
NICOLET	F	LOTUS Elan 1964
NOBLET	F	FERRARI 275 GTB 1965
OFFERGELD/RAUMANN	D/D	ALFA ROMEO TZ 1963
QUEFFELEC/ROGER/LOREILLE	F/F/F	AC Cobra 1964
READ	USA	FERRARI 250LM 1964
REDELE/MAECHLER	F/F	ALPINE M 63 1963
SAGE/MAUNOIR	CH/	ALFA ROMEO TZ 1964
SCHENK	D	PORSCHE 904 1964
SCHMIDT/JAMIESSON/LYON	USA/USA/USA	PORSCHE 356 B Carrera 2 1963
SIDERY-SMITH/ROGERS	GB/GB	MG Le Mans 1965
SINGLETON	USA	FERRARI 275 GTB 1966
SPADINI/VOGT	CH/CH	JAGUAR Type E 1964
STRUB/RENAULT/VAN GELDER	F/F/NL	JAGUAR Type E 1961
VOYAZIDES/YOUNG	GR/GB	FORD GT40 1965
WANTY	B	ALFA ROMEO TZ 1964
WIRICHS	D	PORSCHE 904 GTS 1964

Grid 5 1966 - 1971

Drivers	Nationality	Car
ALBUQUERQUE	P	CHEVRON B16 1970
AMARAL	P	PORSCHE 908 1969
ANSEMBOURG/REGOUT	B/B	PORSCHE 917 1969
BAMFORD	GB	FERRARI 365 GTB/4 1972
BAMFORD	GB	FORD GT40 1965
BAMFORD/HANCOCK/FISKEN	GB/GB/SCO	CHEVRON B8 1967
BARBOT/BAKER	P/GB	LOLA T70 1969
BERTONI	F	PORSCHE 914/6 GT 1970
BESSON	F	ALPINE A 220 1968
BLOOHN/DOWLING	GB/GB	FORD Shelby 350 GT 1966
BURNETT/MCDONNOUGH	GB/GB	CHEVRON B8 1968
CAMPBELL-WALTER	GB	LIGIER JS 3 1971
CAZALIERES	F	FERRARI 512 S 1970
CIAURRIZ/CIAURRIZ/MORENO MURUVE	E/E/E	BIZZARRINI 5300 GT 1967
CONNOR/SULLIVAN/MARSH	USA/USA/GB	FERRARI 365 GTB/4 1972
COTTER	USA	CHEVROLET Corvette 1969
DEPOIX/COHIGNAC	F/F	CHEVROLET Corvette 1969
DEUTSCH/BARTH/HUBER	AUT/D/AUT	PORSCHE 908 1969
DEVIS/MOLLEKENS	B/B	ALFA ROMEO T33/2 1968
ESCANDE/GUERMONPREZ	F/F	LOLA T212 1971
GILES/WATTS	GB/GB	LOLA T212 1971
GRUAU/DURAND	F/F	FORD Shelby 350 GT 1965
GUERIN	F	FERRARI Dino 246 GT 1969

GUIKAS	F	MATRA MS 650 1970
GUILLOT	F	CHEVRON B16 1970
GUITTARD/AYARI	F/F	PORSCHE 906 1966
HINDERER/STRETTON/BAYERN	D/GB/D	LOLA T70 Mk III 1967
HOOK/LEONARD	USA/USA	PORSCHE 908 1968
HOTTINGUER	F	CHEVRON B8 1968
JUNNE/COMAS	F/F	PORSCHE 910 1967
KATO/MISAKI/HORI	J/J/J	ALPINE A 210 1966
KOERVER/KÖLNBERGER	D/D	FORD Shelby 350 GT 1965
LAFOURCADE/LAFOURCADE	F/F	PORSCHE 906 1966
LE JEAN/RIVET FUSIL	F/F	FORD Capri 2600 RS 1970
LECOU/BARGE	F/F	FORD GT40 1968
LEVENTIS/HARDMAN	GB/GB	FERRARI P3 1966
LUCO	CH	PORSCHE 917 1971
MATHAI/MATHAI	D/D	PORSCHE 906 1966
MEINS/WILSON	GB/USA	LOLA T70 1968
MILLE	F	LOLA T70 1968
MILOE	F	PORSCHE 908/3 1969
MOYES/RICHARDSON	GB/GB	PORSCHE 914/6 GT 1971
MURRAY	USA	FORD GT40 MarkII 1966
NAHUM/THUNER	TR/CH	FORD GT40 MarkII 1966
NICOLET/NICOLET	F/MC	CHEVRON B16 1970
PAOLETTI/BERMUDE	F/F	CHEVRON B16 1969
PEROU/CHEMINOT	F/F	CHEVRON B8 1968
QUINIOU/FILHOL	F/F	CHEVRON B16 1970
RICHRATH/RAUMANN	D/D	PORSCHE 906 1966
RICKETTS/HANDS	GB/GB	LOTUS Type 47 1967
ROCHER	F	PORSCHE 906 1966
ROSINA	I	LOLA T70 1969
SANDERS/PYE	GB/GB	LOLA T212 1970
SARAZIN/MIGNERY	F/F	CHEVROLET Corvette 1969
SAVOYE/CLOUZEAU	F/F	ALPINE A 110 Berlinette 1300S 1969
SCHICKENTANZ/SCHNELLER/FELLNER	D/AUT/AUT	PORSCHE 906 1966
SCHRAUWEN	B	CHEVRON B8 1968
SCHRECKENSTEINER	D	PORSCHE 914/6 GT 1969
SLACK/LALONDE/ELLIOTT	GB/GB/GB	PIPER GTR 1969
STEPAK	F	ALPINE A 210 1966
STEPAK/ORTELLI	F/MC	ALPINE A 220 1969
STROLL	CDN	FERRARI 512 M 1970
THADANI	IND	FERRARI 275 GTB/C 1966
THUNER/NAHUM	CH/TR	LOLA T70 1967
ZUMTOBEL	AUT	PORSCHE 906 1966

Grid 6 1972 - 1979

Drivers	Nationality	Car
BARBOT/BAKER	P/GB	PORSCHE 935 1978

BASSO	F	BMW 3.0 CSL 1974
BERNECKER/BERNECKER	D/D	FERRARI 512 BBLM 1978
BIRCHENHOUGH/ALBOROUGH	GB/GB	LOLA T290 1972
BIRRANE	GB	DE CADENET Le Mans 1977
BOURGOIN/LE JEAN	F/F	LOLA T 296 1977
BRYAN	USA	CHEVRON B 36 1975
BURCKHARDT/SCHORNO	CH/CH	SAUBER C-5 1976
BURNETT	GB	CHEVRON B 26 1974
CAZALIERES	F	FERRARI 365 GTB/4 1972
COLL	F	GRAC GOTTI MT 20 1974
COMAR/MEINERS	F/I	ALFA ROMEO 33TT12 1974
COTTER	USA	PORSCHE 935 1977
DA ROCHA/ICKX/NICOLET	F/B/F	LOLA T 298 1979
DEGAND/LARROUSSE	F	FERRARI 512 BBLM 1979
FARTHING/JOLLY/FURNESS	GB/GB/GB	CHEVRON B 26 1974
FÖVENY	AUT	PORSCHE 911 RSR 3,0l 1974
GADAL/LALOGÉ	F/F	PORSCHE 911 RS 3,0l 1974
GOODMAN	USA	FERRARI 512 BBLM 1979
GRISON/HAMEL/AUDONNET	F/F/F	WM P 76 1976
GUIKAS	F	FERRARI 512 BBLM 1979
GUILLOT	F	LOLA T292 1973
GUITTARD/AYARI	F/F	PORSCHE 935 1979
HALS/DRYVER	B/B	DE TOMASO Pantera Gr. IV 1972
HINDERER/STRETTON/BAYERN	D/GB/D	BMW M1 1979
JÖRGENS/BRATKE	D/D	DE TOMASO Pantera Gr. IV 1975
KNAPFIELD	GB	FERRARI 512 BBLM 1979
LACAUD	F	LOLA T294 1974
LECOURT	F	BMW M1 1979
LECOURT	F	PORSCHE 911 RSR 2,8l 1973
LESSEPS	F	PORSCHE 911 RSR 2,8l 1973
LEWIS	USA	LOLA T290 1972
LUCCHINI/DOR	I/CH	PORSCHE 934 1976
LUCO/BARTH	CH/D	PORSCHE 936 1977
MAC ALLISTER	USA	GULF Mirage 1972
MACARI	GB	PORSCHE 911 RSR 3,0l 1974
MAHE	F	LOLA T286 1978
MAHE/BAUDOIN	F/F	LOLA T280 1972
MASON/NORMAN/HALES	GB/GB/GB	FERRARI 512 BBLM 1979
MATHAI/MATHAI	D/D	LOLA T290 1972
MICHERON/MICHERON	F/F	FORD Capri 2600 RS 1972
MILOE	F	PORSCHE 911 RSR 3,0l 1974
NICOLET/NICOLET/FAGGIONATO	F/MC/MC	CHEVRON B21 1972
PARRADO/BESSADE	URU/F	MATRA MS 670 1972
PESCAROLO/ANDRUET	F/F	INALTERA 1976
PIERSON/SCHWARTZ/DONOVAN	USA/F/GB	DODGE Charger 1976
POPPER/MILLE	CH/F	LANCIA Stratos Gr. IV 1974

RUPP/BOYER	F/F	PORSCHE 911 RS 3,0l 1974
SADELEER/HALLYDAY	CH/F	BMW M1 1979
SADELEER/HALLYDAY	CH/F	BMW CSL Luigi Gr.2 1973
SCHICKENTANZ/SCHNELLER/FELLNER	D/AUT/AUT	BMW M1 1979
SCHLEIFER	D	TOJ SC 206 1979
SERPAGGI/RAGNOTTI	F/F	ALPINE A 443 1978
SKIDMORE/RAHAL	USA/USA	LOLA T286 1976
STRANDELL	D	PORSCHE 935 K2 1977
STROLL	CDN	FERRARI 512 BBLM 1979
THOISY/HAEZEBROUCK	F/F	CHEVRON B21 1972
TITFORD/REEVES	GB/GB	FORD Capri 2600 RS 1972
TOGEL/DENZER	D/D	BMW 3.0 CSL 1975
TRABER/DEVIS	CH/B	BMW M1 1979
WANG	GB	FERRARI 308 GT4 Le Mans 1974
WETZEL	D	PORSCHE 911 RSR 3,0l 1975
WUNSCH	D	LOLA T294 1974
YAMANO/NAKURA	J/J	PORSCHE 911 RS 2,7l 1973
ZURSTRASSEN	B	OSELLA P.A 5 1976

*Story/Photos - **Classic Driver***

ClassicInside - The Classic Driver Newsletter

Free Subscription!

<https://www.classicdriver.com/en/article/le-mans-classic-2006-preview>

© Classic Driver. All rights reserved.